

# NAE Secures Strategic Pilbara Gold Project – W.A.

ASX Release | 30 July 2020

ASX Code | NAE

## HIGHLIGHTS

- NAE's technical team has identified and secured a strategic Gold Project via new applications in the Central Pilbara district of Western Australia
- The 'Quartz Hill Gold Project' is located ~50km south of De Grey Mining's (ASX: DEG) Hemi Gold discovery and immediately adjacent to Kairos Mineral's (ASX: KAI) Croydon project
- The project is 100% owned and comprises a total area of 1,319km<sup>2</sup>
- Licences include granitic rocks of the Sisters Supersuite intrusion
- Prospective for both intrusive-related (Hemi style) and structurally hosted gold mineralisation

New Age Exploration Limited ("NAE" or "the Company") is pleased to advise it has successfully expanded its gold portfolio into the highly prospective Central Pilbara Gold district of Western Australia. The company has secured a 100% owned strategic tenement package located ~50km south of De Grey Mining's (ASX:DEG) Hemi gold discovery and immediately adjacent to Kairos Minerals' (ASX:KAI) Croydon Project.

*NAE Executive Director, Joshua Wellisch commented; "While it is at an early stage, we are very excited to have secured multiple gold targets in such a prospective part of the Central Pilbara. The recent discovery of significant gold mineralisation (Hemi) in a new style of deposit for this region by De Grey Mining has highlighted the potential endowment of these late intrusives."*

*"Establishing a substantial footprint in the highly prospective Pilbara Gold district is an exciting addition to our NZ Gold projects. We are keen to expand our portfolio in both regions and to provide an extensive pipeline of exploration opportunities."*

The newly named 'Quartz Hill Project' comprises six Exploration Licence applications (E47/4406, E47/4407, E47/4408, E45/5724, E45/5725 and E45/5726) covering an area of 1319km<sup>2</sup> situated on the Satirist, Hooley, Wogina and White Springs 1:100,000 scale Geological Map Sheets. Previous Gold exploration on these licence areas has been minimal, although geological mapping by the GSWA is available.

Figure 1 shows the location of these licences relative to other significant gold occurrences in the Central Pilbara district and includes the tenure held by DEG and KAI.

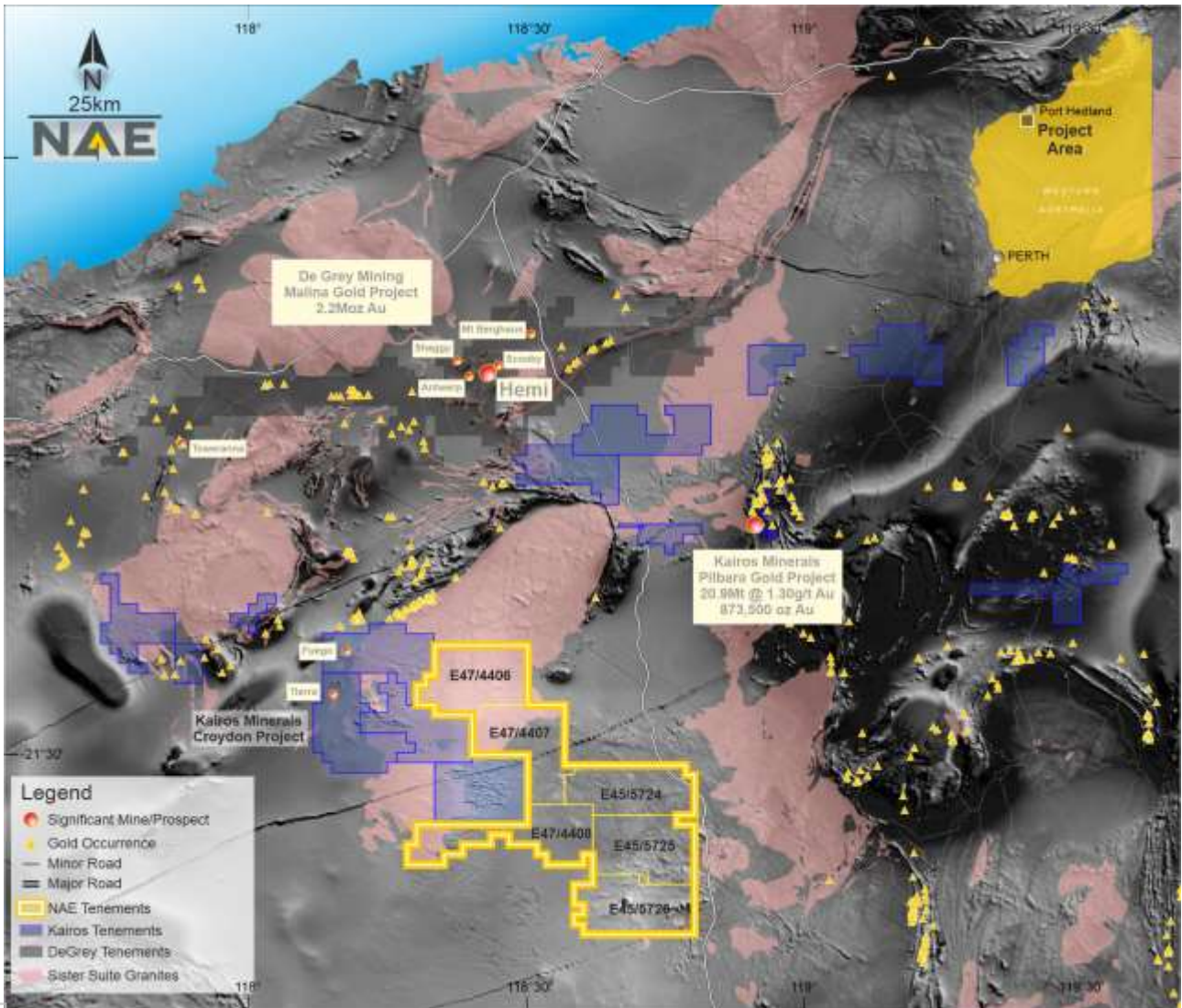


Figure 1 - Location of new licence applications

Geologically the applications overlie a pre-dominantly greenstone sequence of mafic and ultramafic rocks belonging to the East Pilbara Granite-Greenstone Terrane (EPGGT) and Granitoid Complexes comprising the Yule Granitoid Complex and the Sister Supersuite. Some of the granitic intrusions (Yule and Sister granitoids) have magnetic signatures and are of comparable age to those in the Hemi discovery. Figure 2 shows the new licence applications, including highlighted magnetic targets.

For personal use only

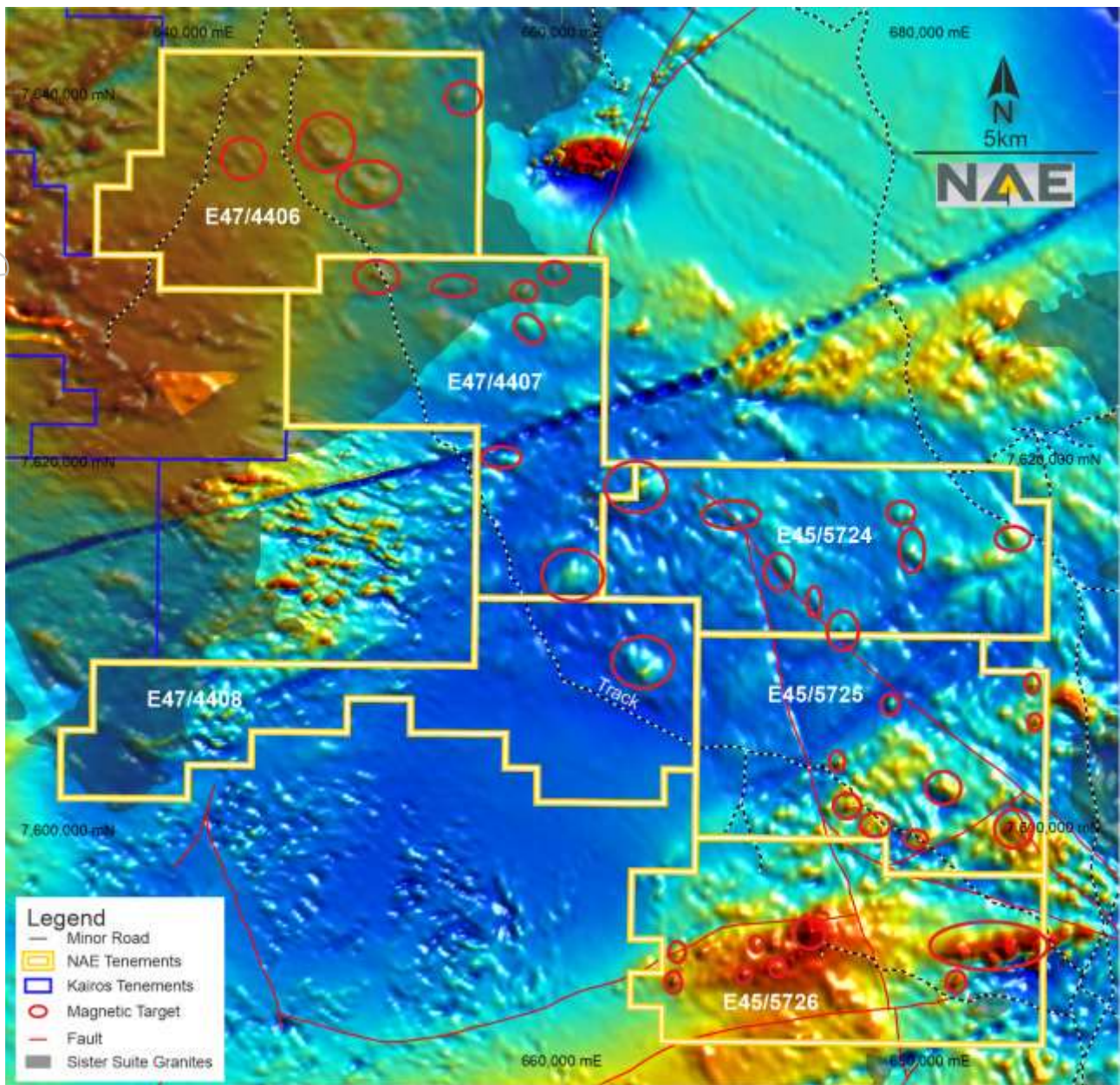


Figure 2 New licence applications including magnetic targets

Steps will be taken in the September quarter to progress the grant of these licences, including proposed site inspections of specific target areas.

The Quartz Hill Project represents a substantial footprint for NAE in the well-endowed Central Pilbara Gold district of Western Australia. The company is reviewing additional opportunities in the region to further expand its project portfolio.

Released with authority of the Board

Joshua Wellisch  
Director

## COMPETENT PERSON'S STATEMENT

The information in this report that relates to Exploration Results is based on information reviewed by Peter Thompson, who is an exploration geologist and is a Member of the Australian Institute of Mining and Metallurgy. Peter Thompson has over 20 years' experience in precious and base metal exploration including gold exploration and resource definition in the Pilbara region. Peter Thompson has sufficient experience which is relevant to the style of mineralisation and type of deposit under consideration and to the activity being undertaken to qualify as a Competent Person as defined in the 2012 Edition of the 'Australasian Code for Reporting of Exploration Results, Mineral Resources and Ore Reserves'. He consents to the inclusion in the report of the matters based on his information in the form and context in which it appears.

### **New Age Exploration Limited**

Level 2, 480 Collins Street  
Melbourne, VIC 3000 Australia  
Phone: +61 3 9614 0600  
Email: [info@nae.net.au](mailto:info@nae.net.au)

**ACN 004 749 508**